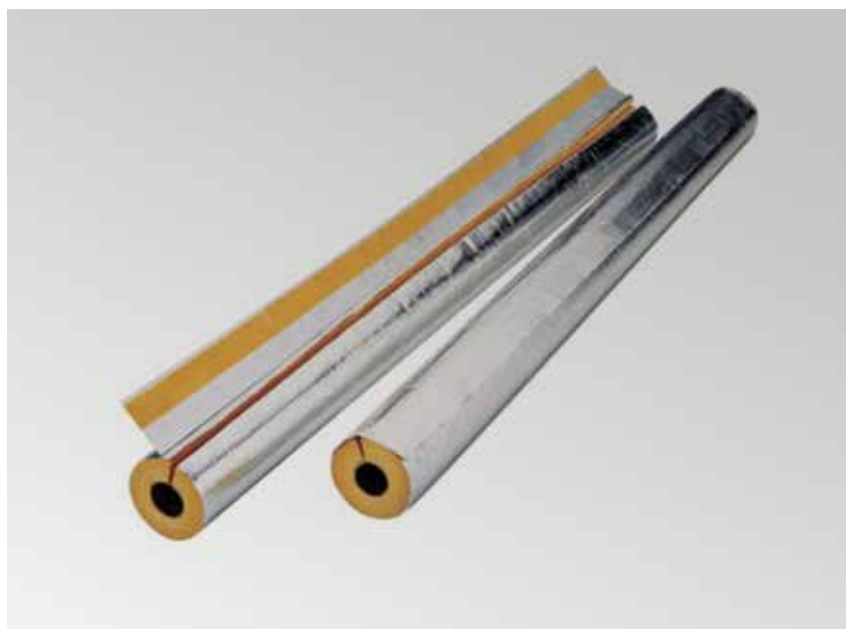


Glasswool Alu-Faced pipe sections for HVAC, Marine or Industry applications



CLIMPIPE pipe solutions provides an easy to install, lightweight and efficient solution for thermal and acoustic insulation in HVAC pipe systems.

ISOVER CLIMPIPES provides topclass thermal insulation for hot water and heating pipes. Alufacing provides efficient water vapour barrier when intact and seems carefully taped.

CLIMPIPE Sections are manufactured from inorganic chemically biosoluble materials and do not include anything that would have effect on corrosion and shall not facilitate microbial growth.



THERMAL INSULATION

High class insulation keeps the medium temperature as designed and secures system operating with minimal losses



SOUND ABSORPTION

Superior acoustic protection to reduce noise transmission through the duct- or pipework system



FAST INSTALLATION

Thanks to its light weight and high flexibility, it can be installed by one person without any special equipment



CHARACTERISTIC	SYMBOL	UNIT	QUANTITIES AND DECLARED VALUES						STANDARD
Thermal conductivity	T	[°C]	10	50	100	200	300	400	EN ISO 13787 EN ISO 8497
	λ	[W/(m•K)]	0.033	0.036	0.043	0.062	0.092	0.130	
Thermal behaviour	T	[°C]	< 550 °C (tape and alu-facing 80 °C)						EN 14707

CHARACTERISTIC	SYMBOL	UNIT	QUANTITIES AND DECLARED VALUES						STANDARD
Reaction to fire	-	-	Non-combustible, Euroclass A ₂ -s1,d0						EN 13501-1
Application field	-	-	ISOVER CLIMPIPE Section provides topclass thermal insulation for hot water and heating pipes Alufacing provides efficient watervapour barrier when intact and seems carefully taped						-
Water behaviour	-	-	Hydrophobic						EN 12086
CE marking			MW-EN14303-T8-ST(+)-500-MV2 MW-EN14303-T9-ST(+)-500-MV2						EN 14303
Quality management	-	-	ISOVER is certified according to EN ISO 9001 and EN ISO 14001						EN ISO 9001 EN ISO 14001

DELIVERY FORM: STANDARD DIMENSIONS / PACKAGING INFORMATION*

Thickness d [mm]	Length [mm]	Diameter Ø [mm]																			
		15	18	22	28	35	42	48	54	60	64	70	76	89	102	108	114	133	140	159	268
100	1200						*	*	*	*	*	*	*	*	*	*	*	*	*	*	*
120	1200								*	*	*	*	*	*	*	*	*	*	*	*	*
20	1200	*	*	*	*	*	*	*	*	*	*	*	*	*	*	*	*	*	*	*	*
25	1200	*	*	*	*	*	*	*	*	*	*	*	*	*	*	*	*	*	*	*	*
30	1200	*	*	*	*	*	*	*	*	*	*	*	*	*	*	*	*	*	*	*	*
40	1200	*	*	*	*	*	*	*	*	*	*	*	*	*	*	*	*	*	*	*	*
50	1200	*	*	*	*	*	*	*	*	*	*	*	*	*	*	*	*	*	*	*	*
60	1200	*	*	*	*	*	*	*	*	*	*	*	*	*	*	*	*	*	*	*	*
80	1200				*	*	*	*	*	*	*	*	*	*	*	*	*	*	*	*	*

Pipe Sections are alu-faced, slit open from one side and equipped with tape closure - further information on demand.

* Check availability and delivery details from your local ISOVER supplier



www.isover-technical-insulation.com

The technical information corresponds to our present state of knowledge and experience at the date of printing (see imprint). But no legal guarantee can be given, unless it has been explicitly agreed. The state of experience and knowledge is developing continuously. Please see to it that you always use the latest edition of this information. The described product applications do not take special circumstances in consideration. Please verify whether our products are appropriate for the concrete application. For further information please contact our Isover sales offices. We deliver only according to our terms of trade and terms of delivery.

SAINT-GOBAIN ISOVER · Tour Saint-Gobain, 12 place de l'Iris · 92096 La Defense Cedex · France

